

HC&G

Hamptons Cottages and Gardens

COTTAGESGARDENS.COM | SEPTEMBER/OCTOBER 2019



STYLISH LAIRS



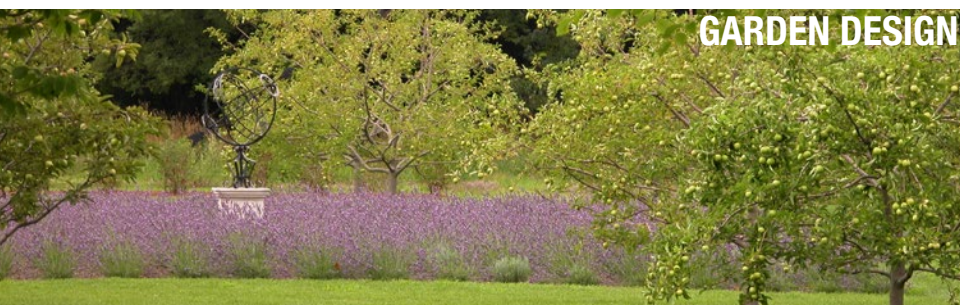
ARCHITECTURE



INTERIOR DESIGN



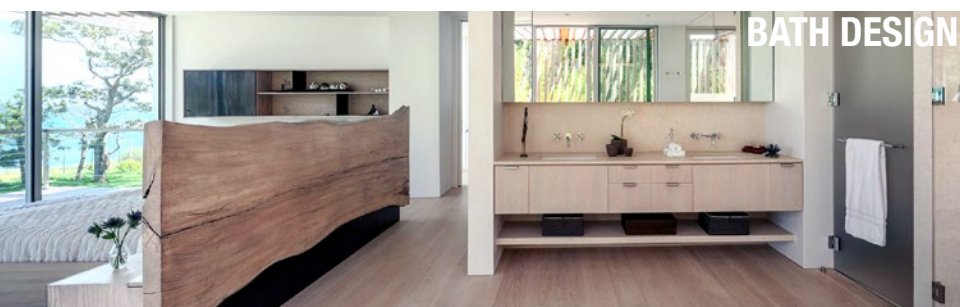
SMALL SPACE DESIGN



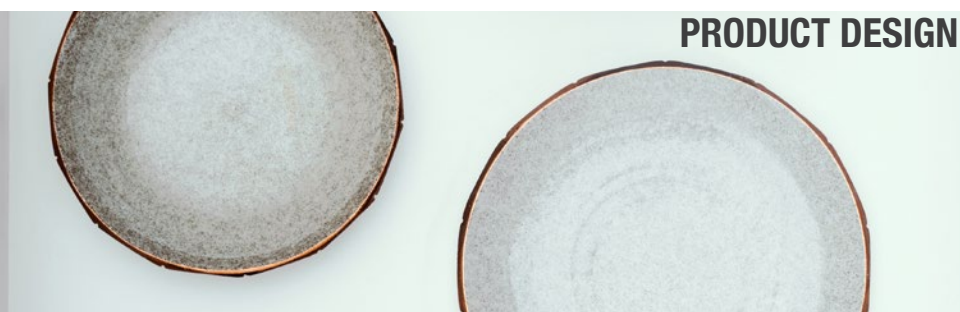
GARDEN DESIGN



KITCHEN DESIGN



BATH DESIGN



PRODUCT DESIGN

2019 HC&G INNOVATION IN DESIGN AWARDS

HC&G celebrated its ninth annual Hamptons Innovation in Design Awards (IDAs) on August 1 at Bridgehampton's Topping Rose House, toasting the best local projects in the categories of architecture and interior, small space, garden, kitchen, bath, and product design. This year's nominees were chosen from dozens of entries by an esteemed panel of industry experts including decorators Dan Scotti and Peri Wolfman, landscape architect Christopher LaGuardia, product designer Michael Aram, and author and book publisher Suzanne Slesin. Read on to see who took home top honors.

TEXT BY ALYSSA BIRD, JENNA SCHUCHARDT, CAITLIN ST JOHN, AND KELLY VELOCCI

Want to enter next year's competition? Go to cgidas.com for more information. For more details on the projects featured on these pages, see Resources.



ARCHITECTURE

winner
**STELLE LOMONT
ROUHANI
ARCHITECTS**

The firm clad a sleek bayfront guesthouse in East Hampton in black-stained cedar so that it would disappear into its wooded surroundings. The low-slung volumes contain the kitchen, master bedroom, and baths, while a soaring open space houses the living and dining areas. This project “shows extreme restraint,” says judge Michael Aram. “It’s a throwback to a simpler time in the Hamptons, when the emphasis was on getting back to nature.”



finalist
BATES MASI + ARCHITECTS

Overlooking a coastal pond and the ocean beyond, this Sagaponack residence was designed to withstand rising sea levels, with the main structure, decks, and pool elevated and spaced out to enable floodwaters to flow beneath and around them. The lower portion of the board-and-batten exterior features only the battens, also designed to allow water to pass through. “It’s an elegant solution to FEMA regulations,” says judge Christopher LaGuardia.

finalist
NAROFSKY ARCHITECTURE

For a spec house in East Hampton, the architects conceived breezeways connecting three pavilions—the largest of which, located in the center, contains the main living spaces and guest bedrooms on the upper level. Above the breezeways are terraces that allow for movement between the structures via the second floor. The design recalls farm buildings, including gabled greenhouses, on an adjacent property.

OPPOSITE: MATTHEW CARBONE; THIS PAGE TOP TO BOTTOM: BATES MASI + ARCHITECTS; COURTESY OF POGGENPOHL



INTERIOR DESIGN



winner ERICA MILLAR DESIGN

New York City-based decorator Erica Millar opted for hand-woven textiles, rough-hewn wood accents, and a neutral color palette to complement the surrounding landscape and unobstructed views of Georgica Pond from this contemporary new build by Bates Masi + Architects. Judge Christopher LaGuardia says, "A feeling of ordered calm pervades the house," while judge Michael Aram praises the design's "warmth and personality."



JOSHUA MCHUGH

finalist FARRIN WEST DESIGN

As a way to honor the integrity of a family's charming 1964 cottage in East Hampton, Sag Harbor-based designer Farrin Cary envisioned a laid-back design scheme that allows the architecture to shine. The decor—meant to marry the homeowners' traditional and modern tastes—incorporates a wide range of soft and sophisticated furnishings.



AS SEEN IN
HC&G
Hamptons Cottages and Gardens

finalist REBECCA ROBERTSON INTERIORS WITH BERG DESIGN ARCHITECTURE

A joint collaboration between interior designer Rebecca Robertson and architect John Berg, this East Hampton home features a predominantly black-and-white color scheme paired with bleached- and limed-wood flooring, wall paneling, and ceilings. Select patterns, including graphic prints and floral accents, inject life into the neutral space. Judge Dan Scotti admires the "beautiful mix of mid-20th-century-modern and contemporary pieces."



TOP TO BOTTOM: JASON PENNEY; ERIC STRIFLER

SMALL SPACE DESIGN

winner M & K DESIGN AND RENOVATION

Upon relocating to the North Fork from New York City, decorator Rachel Rushforth-Worrell embarked on a gut renovation of an underused cottage (connected to a 19th-century barn) in order to turn it into a functioning living space. She opted for pared-down materials, such as white oak and polished concrete, and installed vertical shiplap to give the appearance of added height. Judge Suzanne Slesin describes the cottage as “minimalist, without being bare.”



THIS PAGE: RACHEL RUSHFORTH-WORRELL; OPPOSITE TOP: JEFF HEATLEY; OPPOSITE BOTTOM: ERIC PRINE FOR ATTIC FIRE



finalist MARTIN ARCHITECTS

Situated beside a Japanese-inspired garden on this East Hampton property is a mahogany, glass, and aluminum structure designed to “invite contemplation,” says firm principal Nick Martin. Featuring screened sliding doors and a floating fireplace, the space is ideal for year-round lounging. “A clean and elegant composition,” comments judge Christopher LaGuardia. “The craftsmanship and detailing are exquisite.”



finalist EDGAR PAPAZIAN ARCHITECT

A neglected garage on Sag Harbor’s Main Street—in such disrepair that it was nearing the point of collapse—was reimagined as this public art gallery and event space. The structure, which judge Peri Wolfman describes as “modern, yet traditional,” is clad in knotty-cedar board-and-batten and features a whitewashed interior, an elevated platform for performances, and an exterior deck with a slatted privacy screen. “A clever renovation,” Slesin remarks.



GARDEN DESIGN



winner HOLLANDER DESIGN/ LANDSCAPE ARCHITECTS

The grounds of this 40-acre estate overlooking Sag Harbor Cove include a lush meadow, a woodland garden, a lavender field, and an orchard. The firm restored the property as part of an extensive renovation of a 130-year-old residence known as Maycroft, which served as a convent, a school, and a summer camp before being converted back into a single-family home by local architect James Merrell. Judge Christopher LaGuardia deems it “a varied landscape that delivers on many levels.”



OPPOSITE: CHARLES MAYER PHOTOGRAPHY; THIS PAGE TOP TO BOTTOM: LEAR + MAHONEY LANDSCAPE ASSOCIATES; ERIC PRINE FOR ATTIC



finalist BLAZE MAKOID ARCHITECTURE WITH GUNN LANDSCAPE ARCHITECTURE

Located in East Hampton's historic district, this one-acre site was reimaged to include a trellised lounge area and a new path constructed of salvaged bricks. Another seating area centered around a concrete fireplace is situated within the abandoned foundation of a 1903 home that once stood on the property. “There’s a wonderful mix of history, greenery, and contemporary design here,” says judge Michael Aram. “What an imaginative reuse of an old foundation!”



finalist LEAR + MAHONEY LANDSCAPE ASSOCIATES

At a canalside property in Remsenburg, Lear + Mahoney Landscape Associates transformed a small niche between the motor court and the tennis court into a serene garden. Existing purple-leaved plum trees were the jumping-off point for the space, which contains boxwood parterres with a variety of annuals and oystershell paths. Judge Peri Wolfman calls it “a beautifully executed traditional garden.”

KITCHEN DESIGN

winner SARAH ROSE REILLY

While renovating a 1990s Sag Harbor kitchen, Sarah Rose Reilly strived to make the space feel more in keeping with the circa-1820s home. To do so, she sourced an antique soapstone sink from Massachusetts, installed an island made from reclaimed oak, and chose millwork consistent with the time period in which the home was built. Judge Peri Wolfman praises Reilly's "blending of old and new," and calls the black color palette "fresh."



finalist ANGELA INZERILLO DESIGN

For this North Haven kitchen, Angela Inzerillo conceived a monochromatic scheme that jibes with the home's minimalist interiors, yet doesn't compete with its 270-degree views of Noyack Bay. Caesarstone quartz countertops mimicking the look of concrete extend to a wall punctuated by open shelving, where the homeowner's own wood and found-object artworks are displayed. Judge Suzanne Slesin describes the room as a "relief from the expected all-white kitchen."



finalist DEANE, INC.

Following the recent expansion of a Quogue kitchen by project architect Oscar Giraldo, Deane, Inc.'s Gianna Santoro capitalized on the new layout by incorporating a 13-foot quartzite-topped island, one side of which abuts a vinyl-covered banquette that's paired with two custom tables and bistro chairs. A light color scheme of gray and white further complements the waterside setting.

CLOCKWISE FROM TOP: MATTHEW CARBONE; CHRIS FOSTER; ERIC STRIFLER; CARBONE; PAUL JOHNSON; CHRISTOPHER PATRICK

winner STELLE LOMONT ROUHANI ARCHITECTS

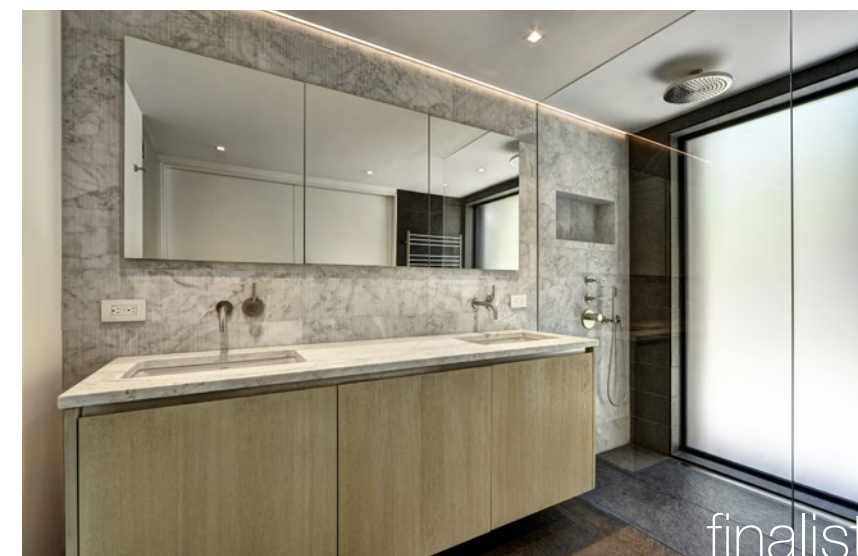
The wall-less master bath of this waterfront East Hampton residence is a true extension of the bedroom, featuring a steam shower that opens onto an outdoor shower and expansive windows that add to the room's airiness. Judge Christopher LaGuardia praises the "beautifully fluid connection" between the spaces, while judge Michael Aram admires the "great use of natural and organic materials."



BATH DESIGN



CLOCKWISE FROM TOP: MATTHEW CARBONE; CHRIS FOSTER; ERIC STRIFLER



finalist MARTIN ARCHITECTS

To remain consistent with an East Hampton home's modernist exterior, Sagaponack-based Martin Architects kept the lines of its master bath extremely precise. Meanwhile, a variety of materials—brushed-titanium fixtures, hand-scraped Carrara marble tiles, and a cerused-oak vanity—lend interest to the neutral palette. Judge Peri Wolfman calls the design "straightforward and functional," while judge Suzanne Slesin praises a "well-utilized space that's simple, but definitely not boring."

finalist WINTER MCDERMOTT DESIGN

Interior designer Maureen McDermott pulled an outdated East Hampton master bath into the present by mixing warm woods with sleek accents, including matte black fixtures, a floating concrete sink, and large-format porcelain tiles. The layout was reconfigured to include a walk-in closet and access to an outdoor shower. "I love the connected outdoor space and the minimal lines," says Wolfman.



AS SEEN IN
HC&G
Hamptons Cottages and Gardens

PRODUCT DESIGN

finalist
FRESH POND MOD WING CHAIR, MICHAEL DEL PIERO
GOOD DESIGN WITH LUKAS MACHNIK

Michael Del Piero reenvisioned the traditional wing chair, conceiving a sculptural armless version with softer lines.

finalist
ANGELS WITH DIRTY FACES CREDENZA, ERLING HOPE

At nearly 10 feet long, Erling Hope's eye-catching credenza incorporates *purkinje* wood, walnut, silvered ash veneer, and custom brass pulls.

finalist
LEATHER WRAP CONSOLE, PLEXI-CRAFT

This acrylic table is punctuated by an interchangeable leather band, allowing for flexibility and customization.

PRODUCT DESIGN CATEGORY JUDGED BY THE EDITORS OF HC&G

finalist
BACKBEND BENCH, SARAH ROSÉ REILLY

Constructed of beechwood and blackened steel and upholstered in a Maharam hemp-linen blend, this bench provides both seating and backbend support during yoga practice.

finalist
EMBROIDERED FABRIC, VIVID BLUEPRINT

Temidra Willock's latest collection of cotton-linen textiles features embroidered designs inspired by everything from medieval crosses to African mud cloth.

finalist
PITCHED RUFF DOGHOUSE, BLAZE MAKOID ARCHITECTURE

Originally designed for the Animal Rescue Fund of the Hamptons, this easy-to-assemble wood-and-metal doghouse by Blaze Makoid Architecture brings the firm's signature contemporary style to the backyard.

finalist
CONCRETE SINK, MARTIN ARCHITECTS

This hand-crafted floating concrete sink disperses water across an expansive plane before it disappears via an invisible drain.

Readers' Choice Winner!

finalist
HAND-PRINTED PACKAGING AND CARDS, MORGAN & KYDD STUDIOS

Fabricated in Peconic, this stationery and gift packaging is festooned with original artwork.

winner
YAHOCU, MAX ID NY

Hand-crafted in Bali, these speckled-porcelain tabletop accessories and stoneware vases and candleholders are dressed up with copper detailing.

finalist
COCKTAIL TABLE, STELLE LOMONT ROUHANI ARCHITECTS

A circular disc wrapped in bronze and topped with smoked glass rotates 360 degrees on a zebrawood and bronze base, providing a larger surface area when necessary.